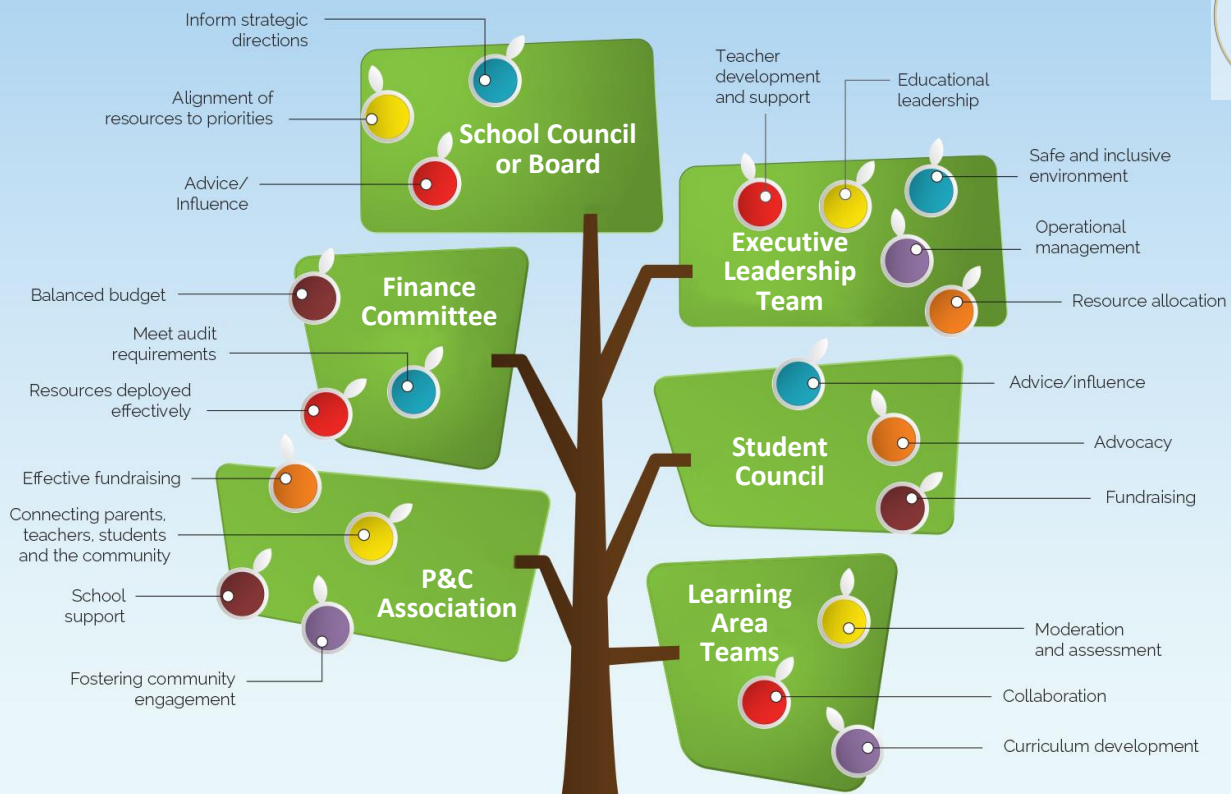


GOVERNANCE TREE

1. School governance is one tree with many branches.
2. Each and every part plays a unique role in ensuring a diverse and thriving governance ecosystem.
3. All branches of governance help create the conditions for student success.
4. The roots of good governance are its foundation principles.



The Roots of Effectiveness >

- Roles and decision rights**
- Effective relationships**
- Setting direction**
- Integrity**
- Accountability**

